

# BMC Performance Manager for Virtual Servers

## Key Benefits

- > Ensure availability of your virtualized operating environments by automatically notifying your IT staff about critical events – before your business is impacted
- > Improve IT personnel productivity by automatically detecting and resolving issues involving virtual machines and associated resource workloads, enabling your IT staff to focus on more strategic initiatives
- > Provide comprehensive, proactive management capabilities for all vital aspects of your virtualized environment to protect the continuity of your business systems



This product integrates with BMC Atrium technologies.

The adoption of virtualization technologies is exploding with vendors offering more comprehensive virtualization solutions that extend capabilities beyond traditional hardware partitioning to logical resource virtualization at the CPU, memory, and disk levels. But this is not the time to abandon core system management principles focused on availability, performance and capacity.

## Business Opportunity

As virtualization on server platforms has matured, IT organizations have been more willing to deploy virtualization technologies as a means to maximize server resources. These virtual machines present unique challenges to system administrators and operations staff, including:

- > Customers need to understand availability of resources across physical servers, and how these resources map to virtual machines.
- > Customers need business relevance to optimize the use of their virtual machines.
- > Customers want a single management interface, not a console for each unique vendor technology.
- > Customers need availability assurance as virtualized environments are being deployed to production environments.
- > Vendor-supplied management tools are focused on resource management (not availability and/or application management).

## The BMC Solution

BMC® Performance Manager for Virtual Servers provides real-time monitoring of virtualized environments, generating events when critical availability and performance thresholds are exceeded. Native intelligence in BMC Performance Manager solutions – based on strong BMC partner relationships and enterprise wide solutions – helps customers:

- > Improve productivity by minimizing errors and downtime
- > Improve performance and customer service by proactively managing service levels
- > Reduce costs by maximizing existing resources

In a VMware deployment, BMC Performance Manager for Virtual Servers discovers all virtual machines and maps them to their associated VMware ESX/GSX servers and/or VMware Groups.

BMC Performance Manager adds application intelligence about these virtual machines, enabling companies to maximize workloads to ensure business priorities are met. The solution provides a single point of control to manage virtualized enterprises, allowing customers to view their heterogeneous environments – including operating systems, databases, and applications – in one console.

No longer do customers need to choose between agent and agent-less monitoring. BMC Performance Manager provides you with the flexibility to manage your infrastructure with one or both solutions.

## Key Features

BMC Performance Manager for Virtual Servers provides a wide range of features, functions, and benefits:

- > Provides a single management interface
- > Lets you discover all virtual machines across the enterprise
- > Maps virtualized resources to physical resources
- > Manages critical availability, performance, and capacity thresholds
- > Provides business context to virtualized environments

- > Provides answer the following resource questions:
  - How much do I have?
  - How much is allocated?
  - How much am I using?
  - Who is using it?
  - How much is left?

### BMC Performance Manager Solutions

BMC® Performance Manager includes solutions to manage locally with an agent or remotely without an agent. Customers can choose the level of management required and deploy the right-sized solution to meet their performance monitoring needs and view all of the managed systems through the BMC Performance Manager Portal. BMC Performance Manager provides you with the flexibility to manage your infrastructure with one or both solutions.

#### BMC Performance Manager Portal

The BMC Performance Manager Portal offers a flexible interface to manage the health of an application, operating system, middleware, or hardware with customized views, dashboards, charts, alerts and event status. It is built on the BMC Portal infrastructure, which provides centralized management through a Web-based browser, minimizing implementation, driving common workflows, and reducing maintenance and training for all BMC products. The Portal improves the usage experience across BMC products for sign-on, navigation, administration, and configuration.

#### BMC Performance Manager Reporting

BMC Performance Manager Reporting is provided to customers at no charge. It provides a wide range of predefined reports for Microsoft Windows, UNIX, and Linux environments. If you need further reporting capability, the licensed BMC Reporting Studio provides an easy-to-use, drag-and-drop interface for creating reports.

#### BMC Performance Manager Intelligent Alerts

BMC® Performance Manager Intelligent Alerts continuously analyzes and correlates performance variables from dozens of enterprise subsystems to create Adaptive Behavior Profiles™, bands of normalcy defined by Dynamic Thresholds™, that reflect each server's unique rhythms. Deviations outside

the norm result in meaningful and actionable Trusted Alarms™ that allow you to identify problems faster, and reduce problem resolution times.

### How BMC Performance Manager for Virtual Servers Helps You Achieve BSM

Successful BSM implementations depend on a well-instrumented infrastructure that supplies relevant information about critical performance, availability, and throughput. It also must interact tightly with the overarching configuration and change processes.

BMC Performance Manager for Virtual Servers helps you achieve BSM by:

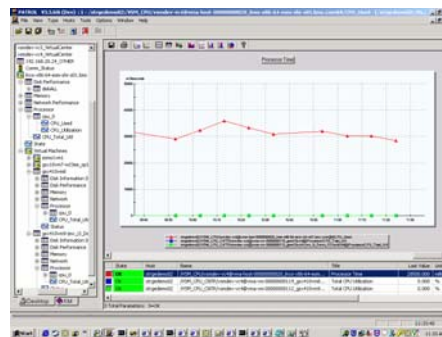
- > Using one common management method to proactively optimize your IT infrastructure throughout the enterprise application lifecycle
- > Implementing consistent methodology and automation of repetitive, complex, and error-prone tasks
- > Using dynamic, event-driven processing to prioritize batch and online workflows
- > Mapping your virtual resources to your physical resource.

### Platform Support

BMC Performance Manager for Virtual Servers supports the following virtual environments:

- > VMware:
  - ESX
  - GSX
  - Virtual Center

For specific release and version information, refer to the product release notes or visit the Platform and Compatibility (PAC) matrix on the BMC Support site at [www.bmc.com/support\\_home](http://www.bmc.com/support_home).



Screen shot of the KM solution exposing CPU performance metrics

### About BMC Software

BMC Software helps IT organizations drive greater business value through better management of technology. Our industry-leading Business Service Management solutions ensure that everything IT does is prioritized according to business impact, so IT can proactively address business requirements to lower costs, drive revenue, and mitigate risk. BMC solutions share BMC® Atrium™ technologies to enable IT to manage across the complexity of diverse systems and processes — from mainframe to distributed, databases to applications, service to security. Founded in 1980, BMC Software has offices worldwide and fiscal 2005 revenues of more than \$1.46 billion. BMC Software. Activate your business with the power of IT. For more information, visit [www.bmc.com](http://www.bmc.com).



To learn more about how BMC can help activate your business, visit [www.bmc.com](http://www.bmc.com) or call 800.841.2031

BMC Software, the BMC Software logos and all other BMC Software product or service names are registered or trademarks of BMC Software, Inc. All other registered trademarks or trademarks belong to their respective companies. ©. 2006 BMC Software, Inc. All rights reserved.

