

## BMC Topology Discovery

Collect critical asset relationship data and map application dependencies

### BMC® Topology Discovery:

- > Integrates with the BMC® Atrium™ CMDB and exports data to custom or third-party CMDBs
- > Provides schema to custom or third-party CMDBs
- > Provides an up-to-date view of relationships that make up business services
- > Increases ROI by better aligning IT with business objectives
- > Reduces troubleshooting time and improves the productivity of IT professionals
- > Enables asset, incident and problem, change and configuration, and service level management
- > Helps to avoid service outages and improve agility by using topology views to more accurately scope, assess risk, execute, and verify configuration changes
- > Enables IT to resolve the most urgent incidents faster by using topologies and impact modeling to associate and prioritize incidents by business service criticality
- > More quickly pinpoints the source of problems by using topologies to differentiate between a symptom and a root cause

BMC® Topology Discovery allows IT operations to optimize business availability and speed up resolution processes by providing the ability to autodiscover all IT assets and dependencies in the organization. It facilitates the automated creation and maintenance of business service models by discovering applications, supporting infrastructure, and relationship mapping — and uses that information to populate and maintain the configuration management database (CMDB).

### Business Challenge

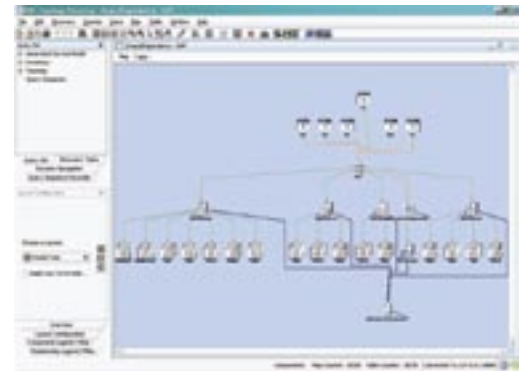
Key business services and processes are so dependent on underlying IT technologies that, without them, many business processes would not be possible. Therefore, ensuring that business services run smoothly, efficiently, and securely requires aligning business services with underlying IT infrastructure.

The challenge many IT organizations face, however, is the need to collect asset data across the enterprise with little or no prior knowledge to what is “out there.” They need to identify not only the assets themselves, but how they are configured. What’s more, the number of IT components, their configurations, the relationships between them, and the constant changes introduced by business and technology needs make manual tracking of an IT environment difficult. In a large distributed environment, it is impractical to conduct manual asset audits and maintain IT service relationship and mapping information.

### Determine Asset Interdependencies

BMC Topology Discovery lets enterprises easily discover and collect details about their IT assets, providing accurate hardware and software inventory information on servers, desktops, and laptops across major platforms.

Understanding which IT elements comprise business applications — and identifying the interdependencies of those elements — is key to successful service management. BMC Topology Discovery assists in this area by performing agentless discovery of the physical network topology, including network hardware, PCs, servers, and printers.



### Map Enterprise Application Dependencies

BMC Topology Discovery provides a complete logical dependency mapping of application components within the IT network, identifying which IT components comprise enterprise applications. These components can include Web servers, application servers, gateways, databases, or application modules. BMC Topology Discovery also maps component dependencies for J2EE applications, SAP, Siebel Systems, VMware, and others.

BMC Topology Discovery returns both physical and logical infrastructure interdependencies — both upstream and downstream — to the CMDB by looking at ports, processes, and communications. As a result, both a physical and logical mapping are provided, whether inside a node or outside, giving you insight into system dependencies.

### Automatically Create a Service Model

BMC Topology Discovery autodiscovers the components and relationships of business applications and then automatically builds a model based on that information. In addition, it watches for changes in those components and relationships, updating the CMDB accordingly. Consequently, BMC Topology Discovery eliminates the weeks — or even

months — that might be spent deploying service impact management tools and manually building service models.

### How It Works

Using a client/server architecture, the BMC Topology Discovery server embeds hundreds of discovery scripts that discover and resolve both the physical network infrastructure and the logical relationships and dependencies of enterprise applications. For example, BMC Topology Discovery can discover all components of an SAP infrastructure, including gateway, database, application servers, Web servers, SAP modules, and applications, and then map the relationships among these components. In addition, from the Java Web client, the administrator can select and schedule several available discovery types, such as network discovery, portscan, J2EE WebLogic, J2EE WebSphere, SAP, Siebel, and many others. The discovered objects populate the embedded object database, as well as the CMDB.

Once discoveries are performed, the administrator uses advanced querying capabilities to select the physical or logical elements that constitute part of an enterprise application, as well as their corresponding relationships. Additional objects can be added, mapped, and saved for future analysis. In addition, topology maps can be filtered by object type to present a view based only on a specific set of attributes, such as application servers that are attached to a given J2EE infrastructure.

Through a direct integration, BMC Topology Discovery automatically populates its results into the BMC® Atrium™ CMDB. The topology and application dependency data is then pulled into the BMC® Service Impact Manager and its Service Model Editor to create and maintain business service models. Additionally, through the BMC Atrium CMDB integration, other key BMC solutions, such as the BMC® Remedy® IT Service Management (ITSM) product line, configuration management, change management, and asset management, can all leverage the physical and logical dependency data provided by BMC Topology Discovery.

### Key Features

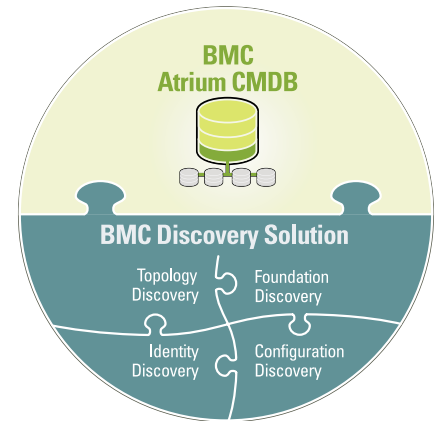
- > Integrates with the BMC Atrium CMDB and exports to custom or third-party CMDBs
- > Provides schema for custom or third-party CMDBs
- > Discovers the physical infrastructure, including network devices, PCs, servers, and printers
- > Discovers enterprise applications, such as SAP, Siebel, J2EE WebLogic, J2EE WebSphere, VMware, and many others
- > Resolves the physical topology links between routers, switches, servers, and load balancers
- > Resolves the logical topology between the different components of enterprise applications
- > Includes Universal Application Discovery (UAD) for custom applications
- > Provides various export capabilities, including CSV, Excel, HTML, PNG, and SVG Visio 2003
- > Includes a multicriteria query system to locate physical and logical components and their dependencies
- > Includes a filtering system to reduce the number of elements displayed in a map, and enable easier understanding of the displayed relationships
- > Allows the creation of different views that can be saved in maps for future analysis
- > Allows scheduling discoveries to update data

### Part of a Comprehensive Discovery Solution

BMC Topology Discovery is part of the complete discovery solution from BMC, which also includes BMC® Foundation Discovery, BMC® Configuration Discovery, and BMC® Identity Discovery. This comprehensive, modular solution addresses the entire spectrum of asset discovery activities and replaces fragmented tools that require cumbersome and error-prone manual steps. In doing so, the solution provides a unified, automated process for identifying all assets in the environment; cataloging them in a common database; and keeping the data current by discovering changes and keeping data up to date.

BMC Discovery is unique in its ability to capture information in all four facets of the IT environment:

- > Assets — What is the total inventory of deployed assets?
- > Configurations — What are the components and settings?
- > Relationships — What are the interdependencies?
- > Users — Who is using these resources?



### Automated Discovery: The first step toward BSM Success

By providing answers to these questions — and by maintaining the data in the CMDB — the BMC Discovery solution enables IT organizations to take a critical first step toward aligning their infrastructure to meet the needs of the business. As such, it helps to build the foundation for successful Business Service Management — quickly, efficiently, and cost-effectively.

For more information on BMC Discovery, please visit [www.bmc.com/discovery](http://www.bmc.com/discovery).

### About BMC Software

BMC Software helps IT organizations drive greater business value through better management of technology. Our industry-leading Business Service Management solutions ensure that everything IT does is prioritized according to business impact, so IT can proactively address business requirements to lower costs, drive revenue, and mitigate risk. BMC solutions share BMC® Atrium™ technologies to enable IT to manage across the complexity of diverse systems and processes — from mainframe to distributed, databases to applications, service to security. Founded in 1980, BMC has offices worldwide and fiscal 2005 revenues of more than \$1.46 billion. BMC Software. Activate your business with the power of IT. For more information, visit [www.bmc.com](http://www.bmc.com).



To learn more about how BMC can help activate your business, visit [www.bmc.com](http://www.bmc.com) or call 800.841.2031.

BMC Software, the BMC So  
All other trademarks belong to their respective companies. © 2006 BMC Software, Inc. All rights reserved.



60487